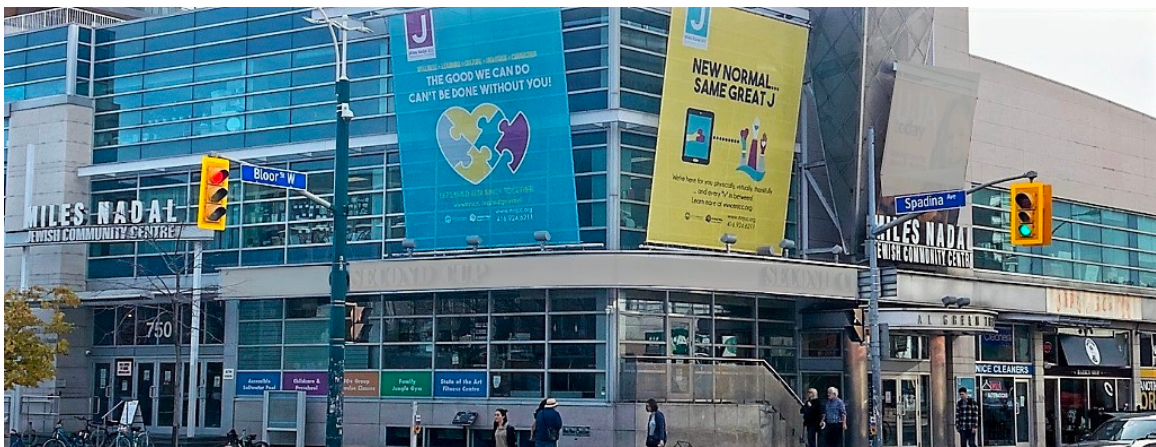


# TORONTO FRINGE FESTIVAL

## AI Green Theatre Venue Guide



### Welcome!

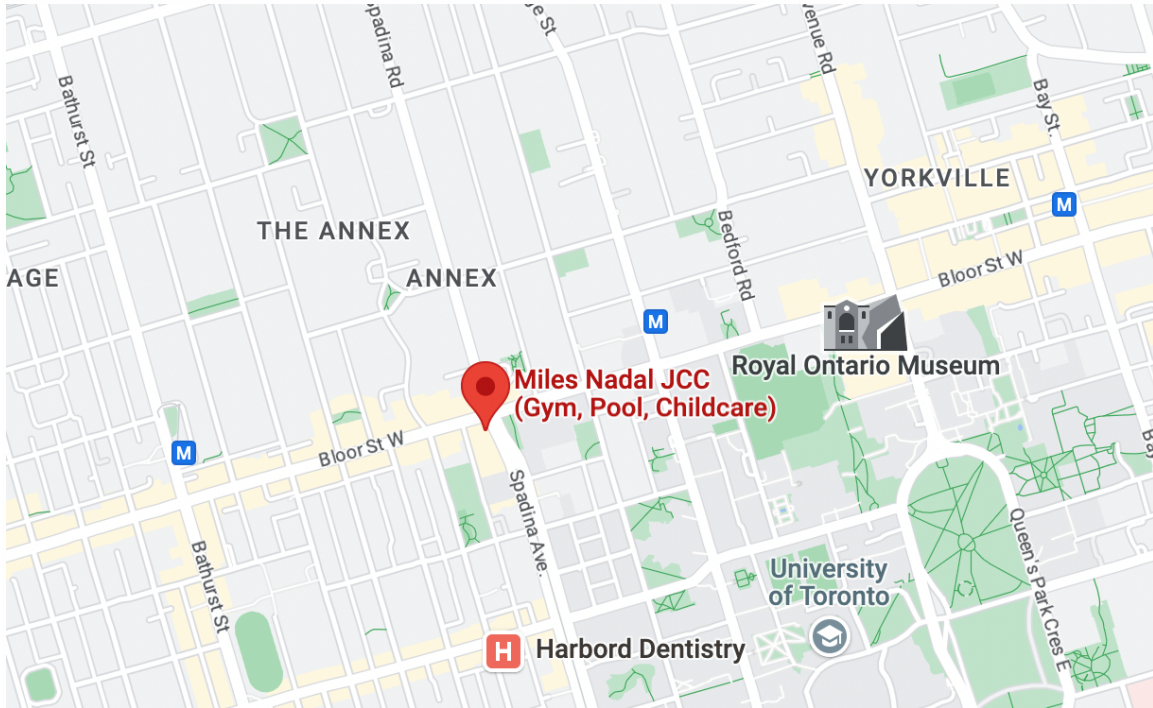
We are looking forward to having you join us at AI Green Theatre. Below is some helpful information that will tell you what to expect when you come to the show.

# Table of Contents

Getting Here .....	3
Arriving .....	5
Before the Show .....	6
Entering the Building .....	8
Lobby .....	9
Performance Space .....	10
During a Relaxed Performance .....	12
Quiet Zone .....	13
Washrooms .....	14
Thank You .....	15

## Getting Here

The AI Green Theatre is located inside the Miles Nadal JCC at the corner of Spadina Ave and Bloor St W. The address is 750 Spadina Ave.





## **Bicycle**

There are bike racks outside of the venue. Please make sure you bring a lock to secure your bike. If you are using Bike Share, you can dock your bike at St. George St and Harbord St.



## **Bus**

The closest accessible bus route is the 127 Davenport route. Get off at Spadina Avenue and Bloor St West and make your way South. The theatre is approximately 100 metres from the bus stop.



## **Streetcar**

The closest accessible streetcar route is the 510 Spadina streetcar. Get off at Spadina Avenue and Bloor St West and make your way South. The theatre is approximately 90 metres from the streetcar stop.



## **Subway**

Spadina Station is the closest accessible subway station. To get to the theatre from here, head South along Spadina Ave.



## **Taxi**

There will be enough room for taxis to make pickups and drop-offs right in front of the main entrance on Spadina Ave.



## **Wheel-Trans**

There will be enough room for Wheel-Trans for make pickups and drop-offs right in front of the main entrance on Spadina Ave.



## **Parking**

Ample parking is available at Green P Lot 259 at 4 Spadina Rd, just north of Bloor St West.

## Arriving

This is what the building looks like from the main entrance, which is on Spadina Avenue.



This is what the building looks like if you are coming East on Bloor Street.



## Before the Show

During the Fringe, you wait outside the venue until your show is announced. This is also where our Front of House is located.

You may need to visit our Front of House if you want to:

- Indicate that you require priority seating
- Indicate that you require alternative seating
- Indicate that you require accessible seatings
- Pick up a headset and receiver for audio described performances
- Pick up earplugs or fidget toys
- Review the venue guide
- Review the access guide for select performances

Our Front of House will be located in front of the donor wall between the two entrances to the theatre.



You will wait in the ticket holders' line. Ticket holders will line up alongside the donor wall. Please let us know if you require seating while you wait.

Fringe staff wear black or white t-shirts and volunteers wear purple t-shirts and would be happy to help you!



## Entering the Building

A Front of House person will audibly announce, as well as hold up a sign, for priority seating for anyone requiring extra time. This includes patrons using accessible or alternative seating. If that's you, then you will enter.



A Front of House person will then make a general entrance announcement and hold up a sign for everyone to enter the theatre a few minutes later. If you haven't already gone in, then it's time.



# Lobby

When you enter the doors, you will be in the lobby. This is what the lobby looks like:



# Performance Space

These are the doors to the Al Green Theatre. The Al Green Theatre is located on the main floor, to the right of the main entrance.



This is a view of the theatre from the stage. You can sit in whichever seat you like! Accessible seating is located both in the front row and in the back of the venue, accessible via elevator.



## **During a Relaxed Performance**

If you are coming for a relaxed performance, there will be a short introduction before the show starts. Someone from the company will let you know a little about the show, characters, and if there is anything that may be surprising during the performance. You can also expect reduced sound and lighting effects. The house lights will be on at a low level so that you can enter and exit safely at any time. Audience members are free to sit or stand, make noise as they need to, or use fidgets as needed. We want you to be comfortable.

## **Quiet Zone**

If you need to leave the theatre during the show for any reason, you are welcome to sit in the quiet zone, which is located in the main lobby. You may still hear some of the sounds from the show while you are in the quiet zone, but it will be quieter than inside the theatre space.

## Washrooms

There are washrooms located on the first floor, down the hallway past the information desk. There are men's, women's and all-gender washrooms. The all-gender washroom has an automatic door.



## **Thank you**

We hope you have a good time at the Toronto Fringe Festival.

If you want to tell us about your time or have feedback that you would like to share, you can call us, write to us, or send us an email.

### **Our address is**

100 Broadview Avenue, Suite 322  
Toronto, ON M4M 3H3  
Canada

### **Our email address is**

[general@fringetoronto.com](mailto:general@fringetoronto.com)

### **Our phone number is**

416-966-1062

Thank you for coming.