

TORONTO
FRINGE

NEXT STAGE

VENUE GUIDE



Welcome!

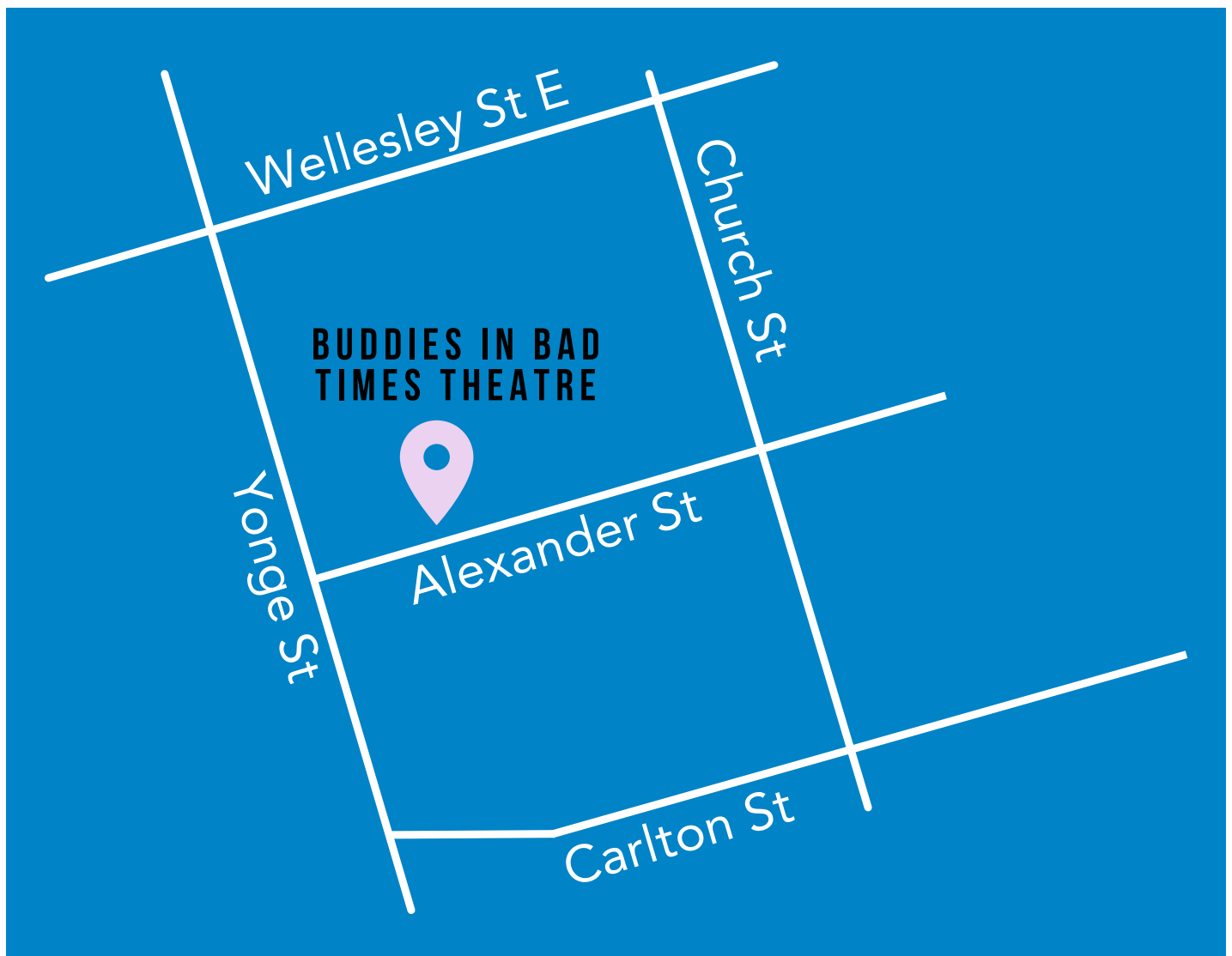
We are looking forward to having you join us Buddies in Bad Times Theatre for the Next Stage Theatre Festival. Below is some helpful information that will tell you what to expect when you come to the show.

TABLE OF CONTENTS

Getting Here	3
Arriving	5
Volunteers and Staff	6
Entering the Building.....	7
Box Office	9
Before the Show	10
The Cabaret	11
Ante Chamber	15
The Chamber	17
Washrooms	20
Elevator	24
Quiet Space	26
Thank You	27

GETTING HERE

Buddies in Bad Times Theatre is located in Toronto, Ontario, at 12 Alexander Street. The closest major intersection is Yonge Street and College Street.





Subway

Take Line 1 to Wellesley Station. The theatre is about 400 metres or a five minute walk south on Yonge Street. Turn left on Alexander Street and the theatre will be on your left.



Bus

Take the 94 Wellesley line, get off at Wellesley Station, and walk about five minutes south on Yonge Street towards the theatre. Turn left on Alexander Street and the theatre will be on your left.



Streetcar

Take the 506 College line, get off at Yonge Street and walk about three minutes north on Yonge Street to Alexander Street. Turn right on Alexander Street and the theatre will be on your left.



Taxi

Buddies in Bad Times is located at 12 Alexander Street. Let your driver know that you would like to be dropped off on Alexander directly in front of the entrance to the right side of the building.



Wheel-Trans

Buddies in Bad Times is located at 12 Alexander Street. Let your driver know that you would like to be dropped off on Alexander directly in front of the ramped entrance to the right side of the building. There is a large curb cut directly in front of the building.



Parking

There is no parking on-site, however, there is limited metered parking on Alexander Street and a Green P lot on Wellesley just west of Yonge at 9 Wellesley St W.



Bike

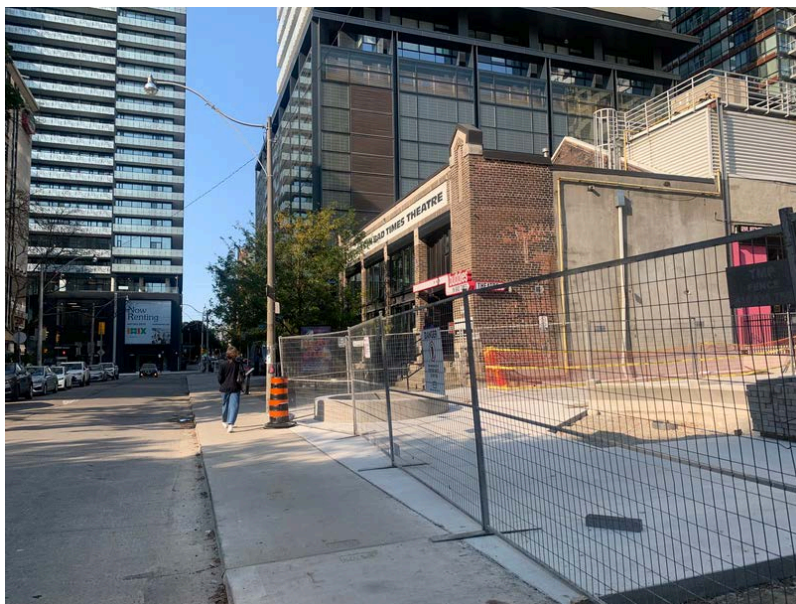
There are numerous bike racks outside of the theatre. Please make sure you bring a lock to secure your bike. If you are using Bike Share, you can dock your bike at the closest dock, located on Alexander St. 1 minute east of the theatre.

ARRIVING

There is one primary entrance to the theatre located on the north side of the street. There is a ramp on the east side of the building that will lead you to the main entrance.



This is what the theatre looks like if you are coming from Yonge Street.



This is what the theatre looks like if you are coming from Church Street.

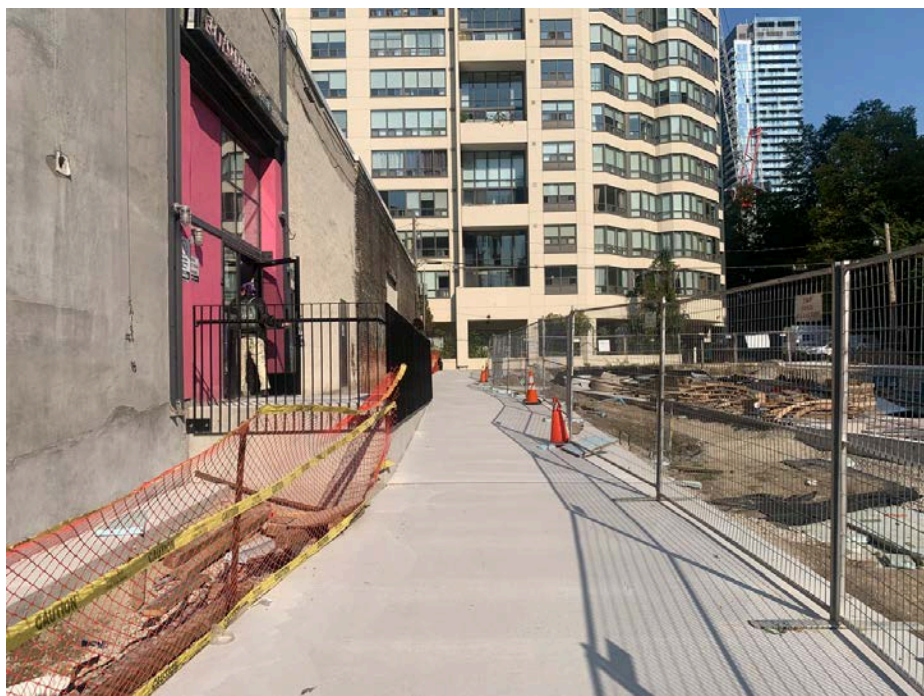
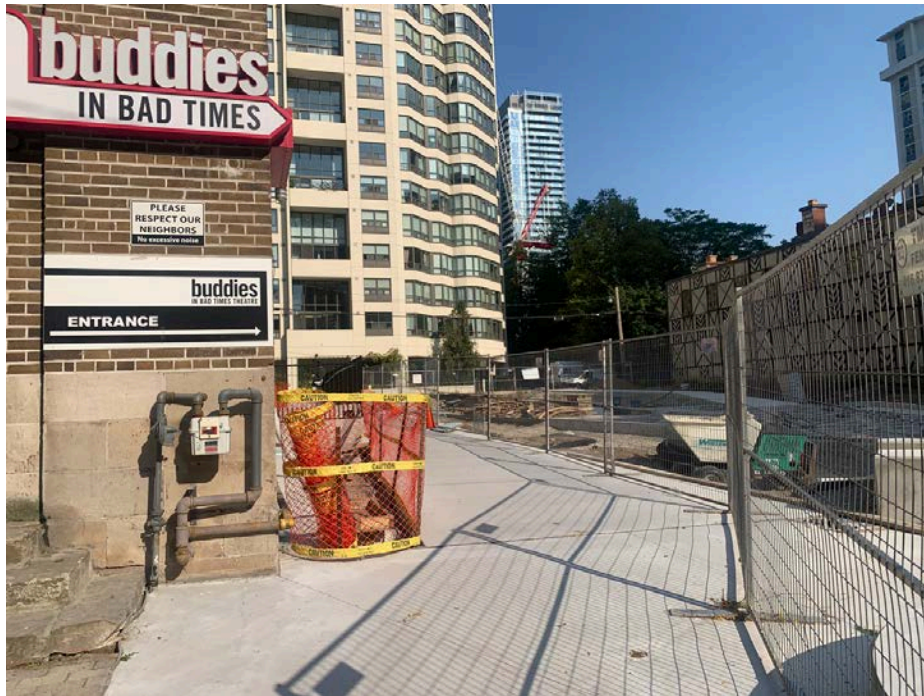
VOLUNTEERS AND STAFF

Next Stage staff and volunteers will be wearing a lanyard that looks like this! They will be available throughout your time at the theatre to provide you with guidance and answer any questions you may have.



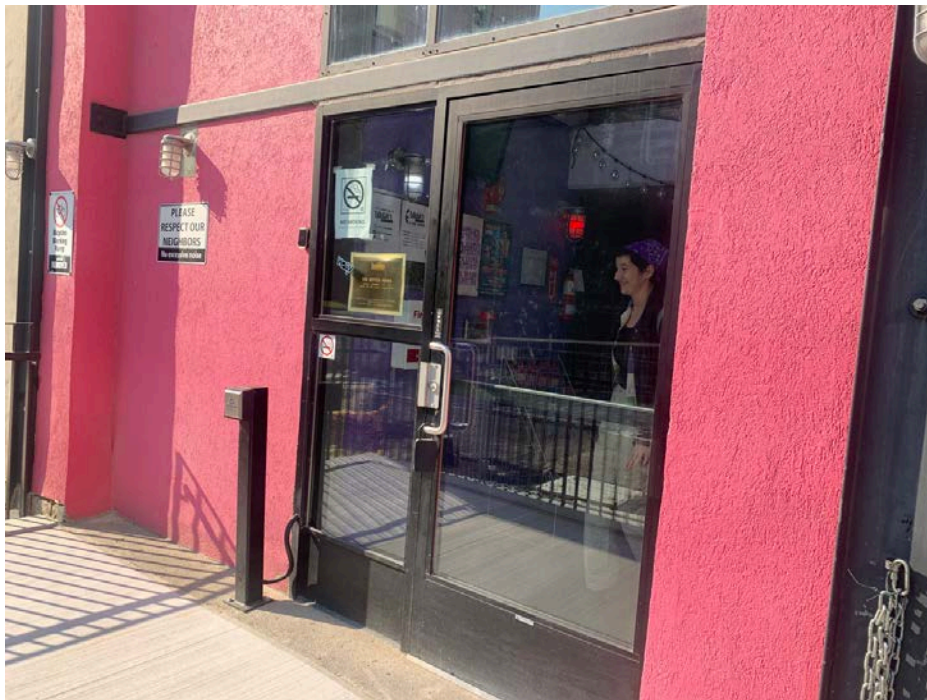
ENTERING

You will enter the building using this brand new ramp located on the east side of the building (72" narrowest point). This will take you directly to the box office.



ENTERING

The ramp wraps around and leads to the door where you will enter into the space.



Door - 39" wide
Button - 32" high

BOX OFFICE

When you enter Buddies in Bad Times, the box office will be to your right, the Cabaret space will be to your left, and the Ante Chamber will be straight ahead. A volunteer will be present in this main space to help direct you to where you need to go. You can scan or purchase your tickets at the box office.



Box Office Counter - 42" high

BEFORE THE SHOW

From this main space, you can:

- Purchase tickets from the Box Office to the right
- Head straight into the Ante Chamber to grab a seat or engage with our Front of House staff to request support or ask any questions you may have
- Head left to enter the Cabaret Space which will act as a lobby space for shows in the Chamber as well as the Cabaret
- Access the lift to your left or head down the stairs straight ahead to access the washrooms or quiet space

You may need to visit our Front of House in the Ante Chamber if you want to:

- Indicate that you require priority seating
- Indicate that you require accessible seating
- Pick up earplugs or fidget toys
- Review the venue guide
- Review the access guide for select performances

THE CABARET

To the left of the main entrance is the Cabaret space! This space will feature two shows at the Next Stage Theatre Festival and will also be used as a lobby throughout the festival for all performances. When you enter the space via the ramp or a set of three steps, the stage will be to your right and the bar will be to your left. There is a large staircase in the centre of the room.

There will be a few tables and chairs set up closer to the stage followed by rows of seats and hightop seating along the sides.

Prior to the show, you will be invited into this space to grab a drink or sit and chat as you wait for the house to open in the Chamber or for the show to begin in the Cabaret.



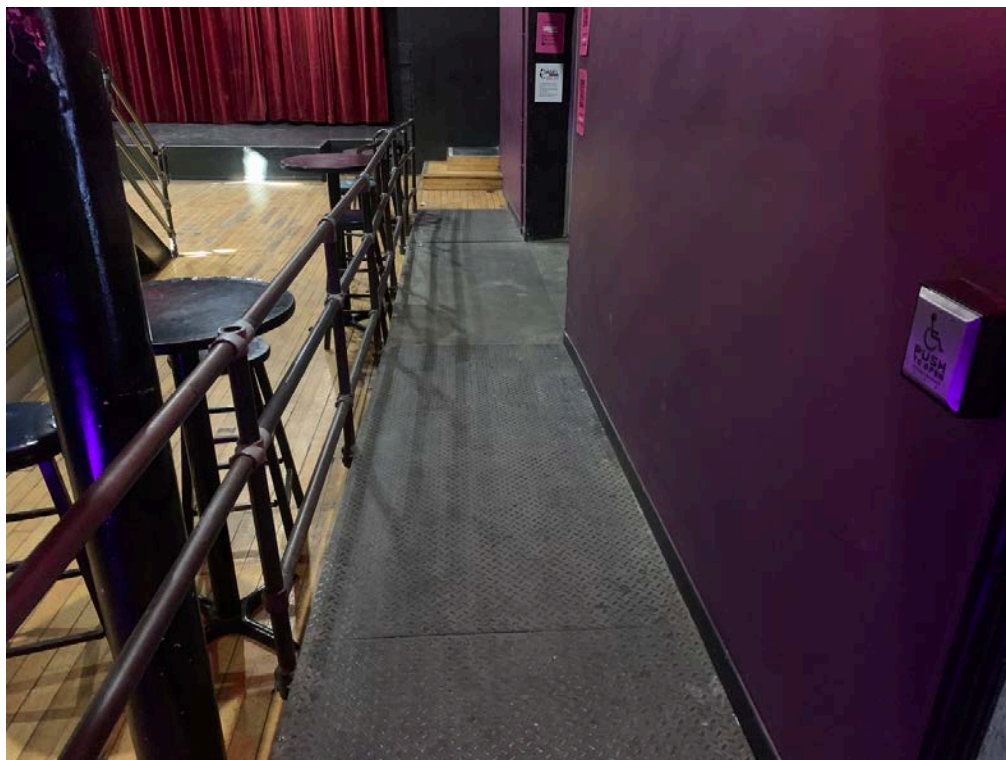
Cabaret Door - 38" wide

Cabaret Button to the left of the door - 39" high

THE CABARET

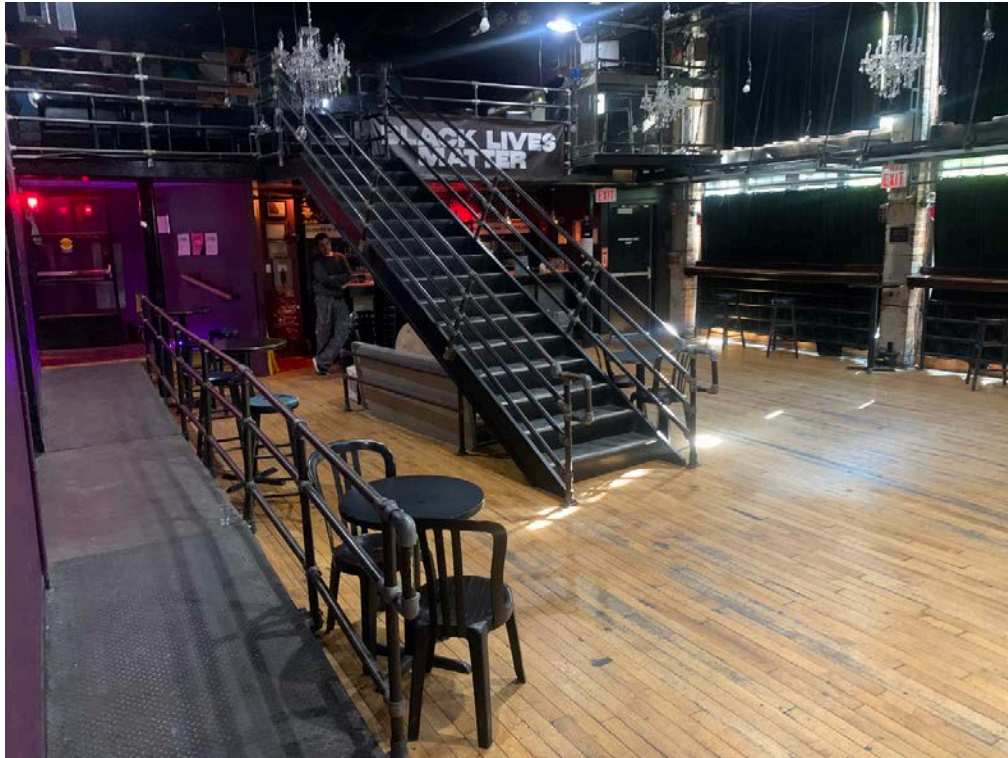


There are two steps to the left or a ramp to the right to enter the space.



Ramp - 40" wide

THE CABARET



This is the Cabaret space!

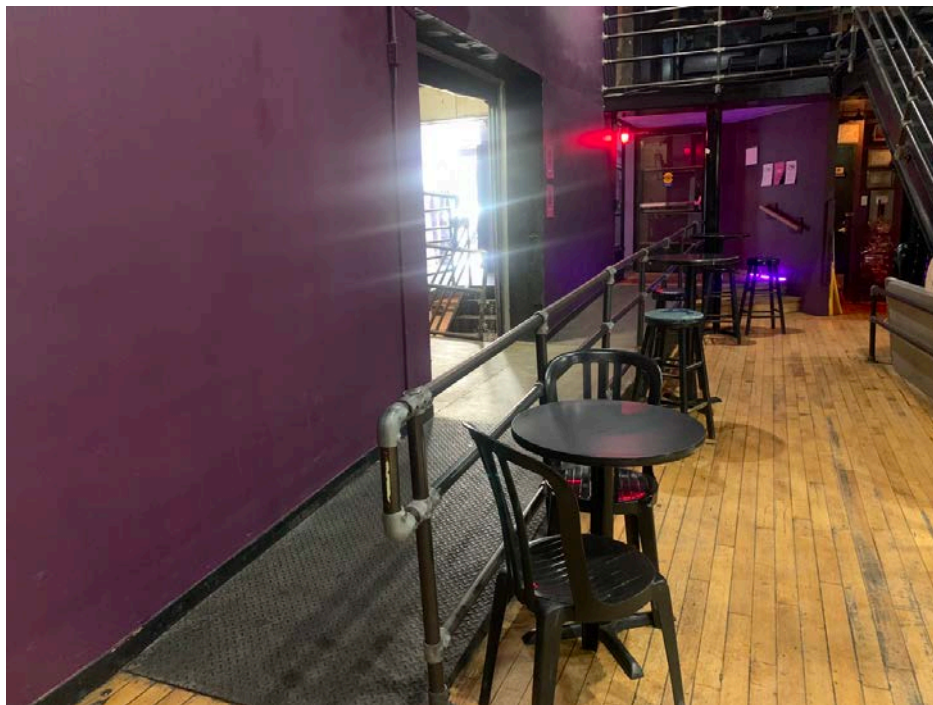


This is a view of the stage from the back of the space.

THE CABARET



There will be a bar (46" high) in the back of the space where you can buy a drink.



If you are seeing a show in the Chamber, a volunteer will direct you to line up up the ramp and in front of the stage to enter the space through the Ante Chamber.

ANTE CHAMBER

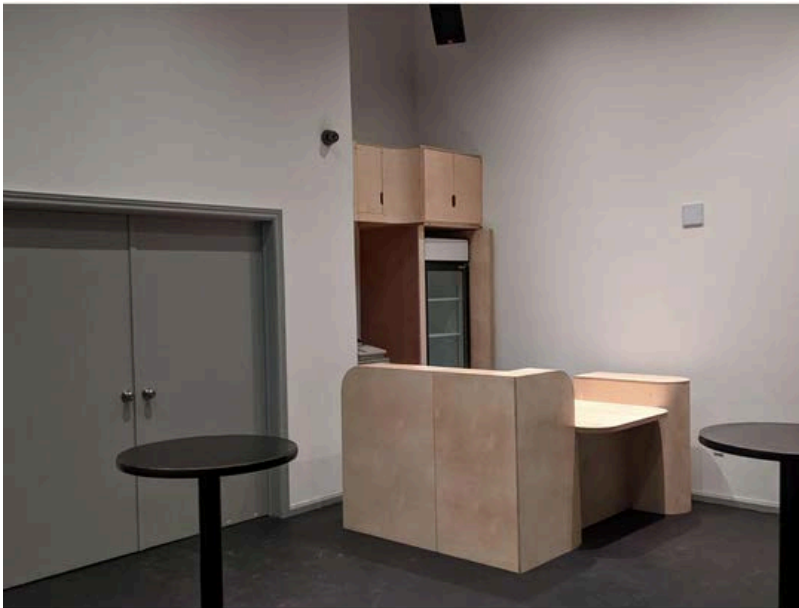
Turning left at the top of the ramp you will enter the Ante Chamber through the Bridge (76" wide).



ANTE CHAMBER

This is the Ante Chamber! Upon entering Buddies in Bad Times, it will be straight ahead, but can also be accessed directly from the Cabaret and the Chamber. Here you can grab a seat or chat with Front of House staff about your access needs.

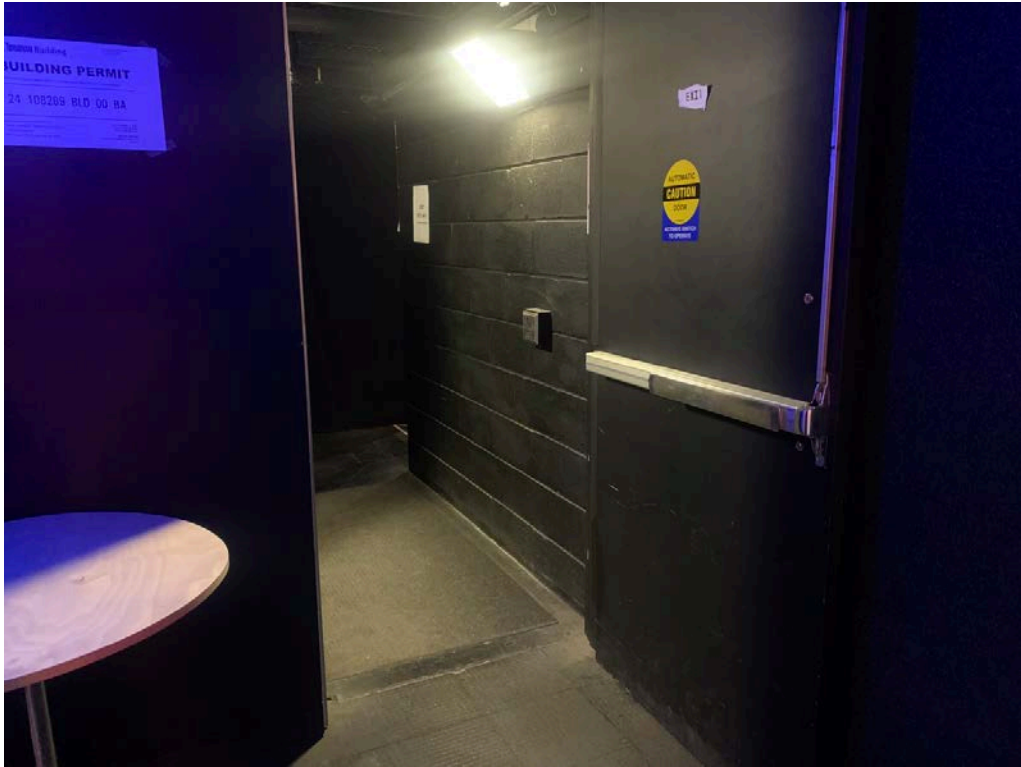
If you require Priority Seating, you will be directed to wait here to be seated first.



Volunteers will direct you to head through the door on the right (44" wide) to enter The Chamber.

THE CHAMBER

Upon exiting the Ante Chamber, you will turn left to head through this doorway (38" wide) that will lead you in to the left side of the audience. These doors will be propped open.



THE CHAMBER

If you are seeing a show in the Chamber, you will be notified by a volunteer when the house opens and will head through the Ante Chamber and into the theatre. When you enter the Chamber, you will go around the side of the risers of seats heading towards the stage. There will be seats reserved for access needs, but other than that, it is general admission and you are welcome to pick any seat. There will be rows of chairs set up on risers with aisles on either side and an aisle down the middle closer to the right.



THE CHAMBER

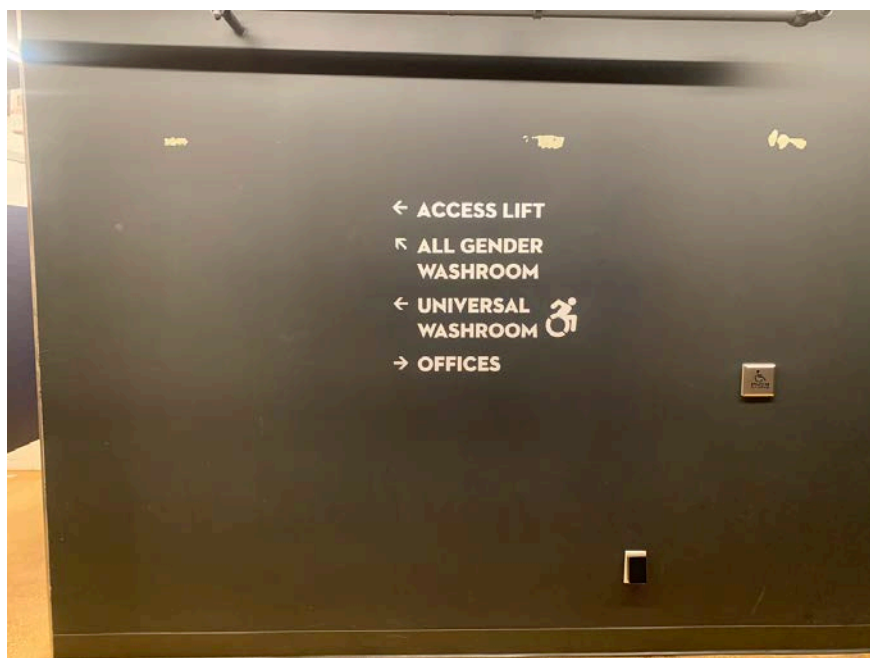
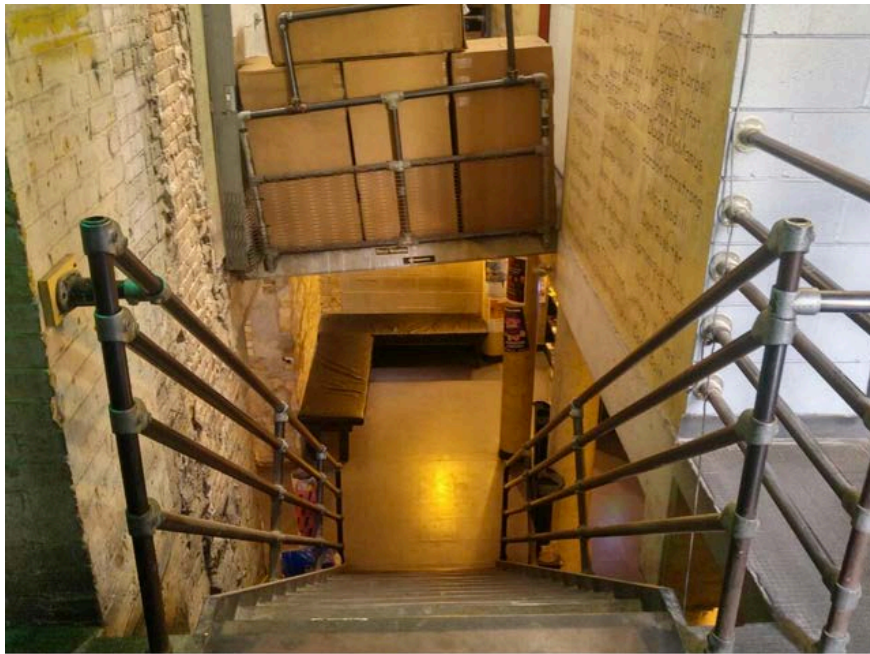
This is the stage in the Chamber! Each show will have a set that will make the space look slightly different.



NOTE: If you are seeing Civilized, the setup of the space will also include some chairs surrounding the stage, providing the audience with a more immersive feel in the round.

WASHROOMS

The washrooms are on the lower level of the theatre and are accessible by stairs or lift. The stairs are directly past the Buddies in Bad Times box office and the washrooms will be at the bottom of the stairs to your left. The main washroom has two large accessible stalls and many small single stalls.



WASHROOMS

The two accessible stalls are first upon entering on your right and left.



Both accessible stalls (59"x82") have grab bars but no emergency buttons.

Toilet - 19.5" high

WASHROOMS

There are 7 additional individual stalls (38"x59") and a sink with four faucets (33" high).



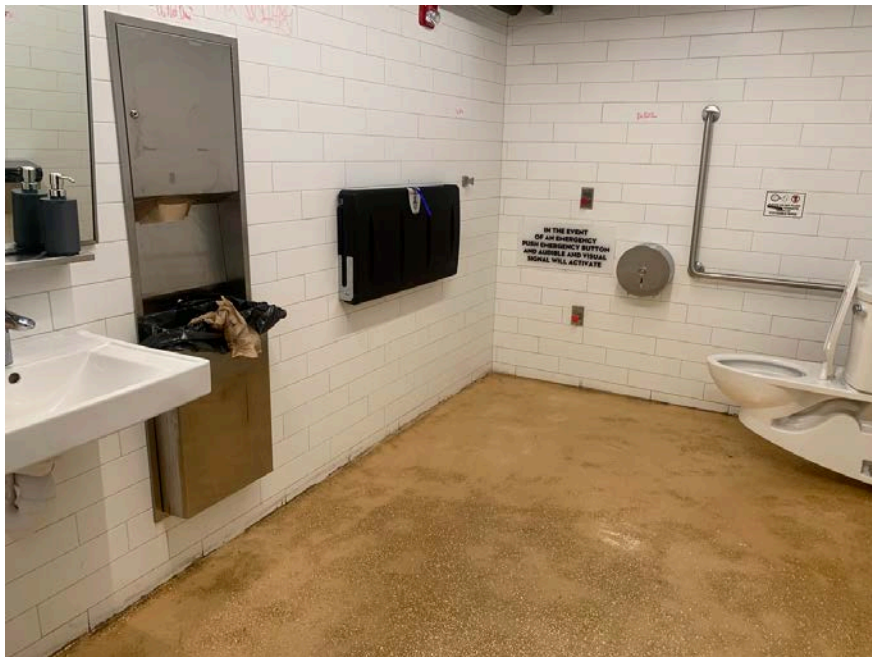
Toilet - 17" high

WASHROOMS

There is one private accessible washroom (137"x78") with push to open buttons, grab bars and emergency buttons.



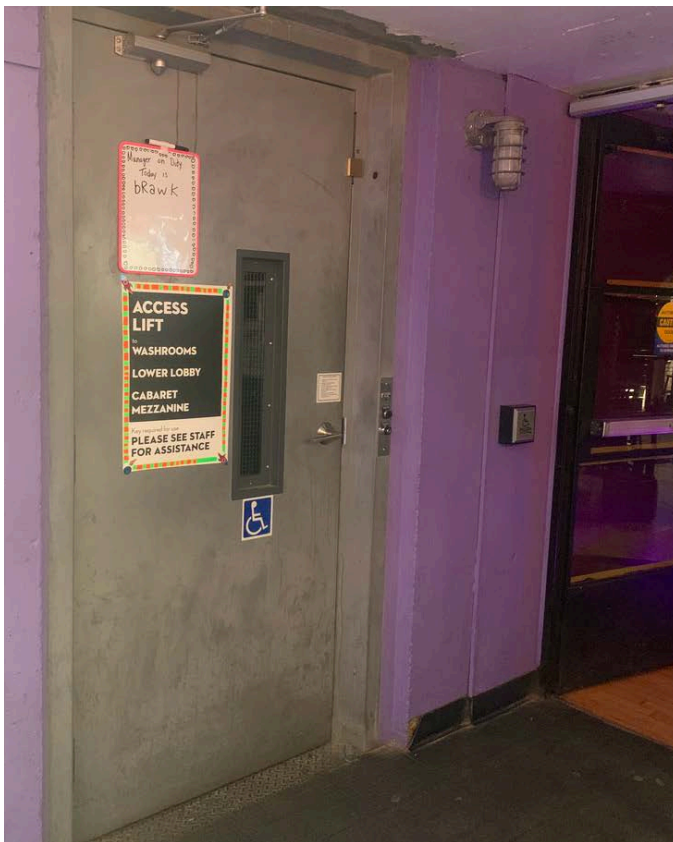
Door - 46" wide
Button - 37" high



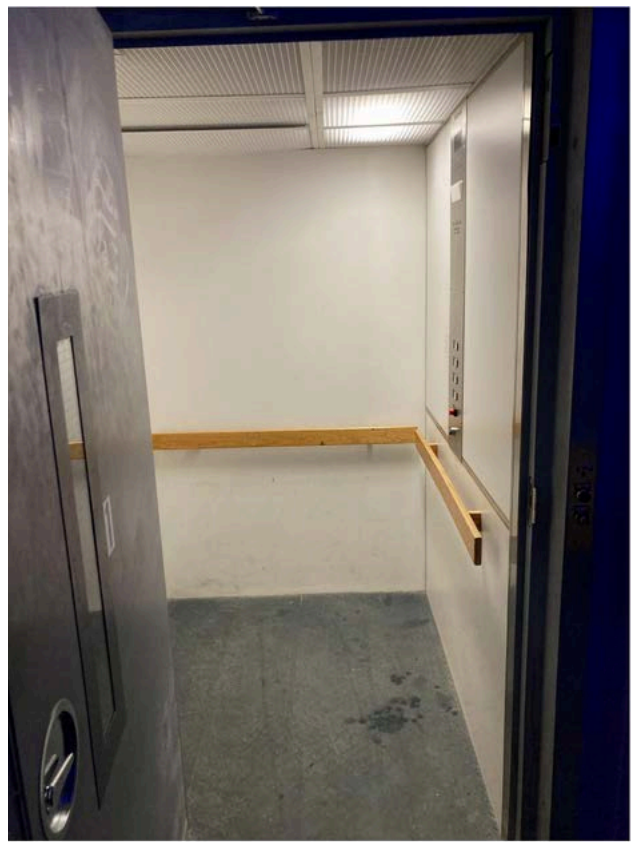
Toilet - 17.5" high
Sink - 34" high

ELEVATOR

There is an attendant-operated lift (59"x50") that can take you down to the washroom as well as the Quiet Space. This lift requires a key, so if you wish to use the lift, please ask a staff member or volunteer for assistance. Upon entering the building, the lift is directly to your left next to the Cabaret space entrance.

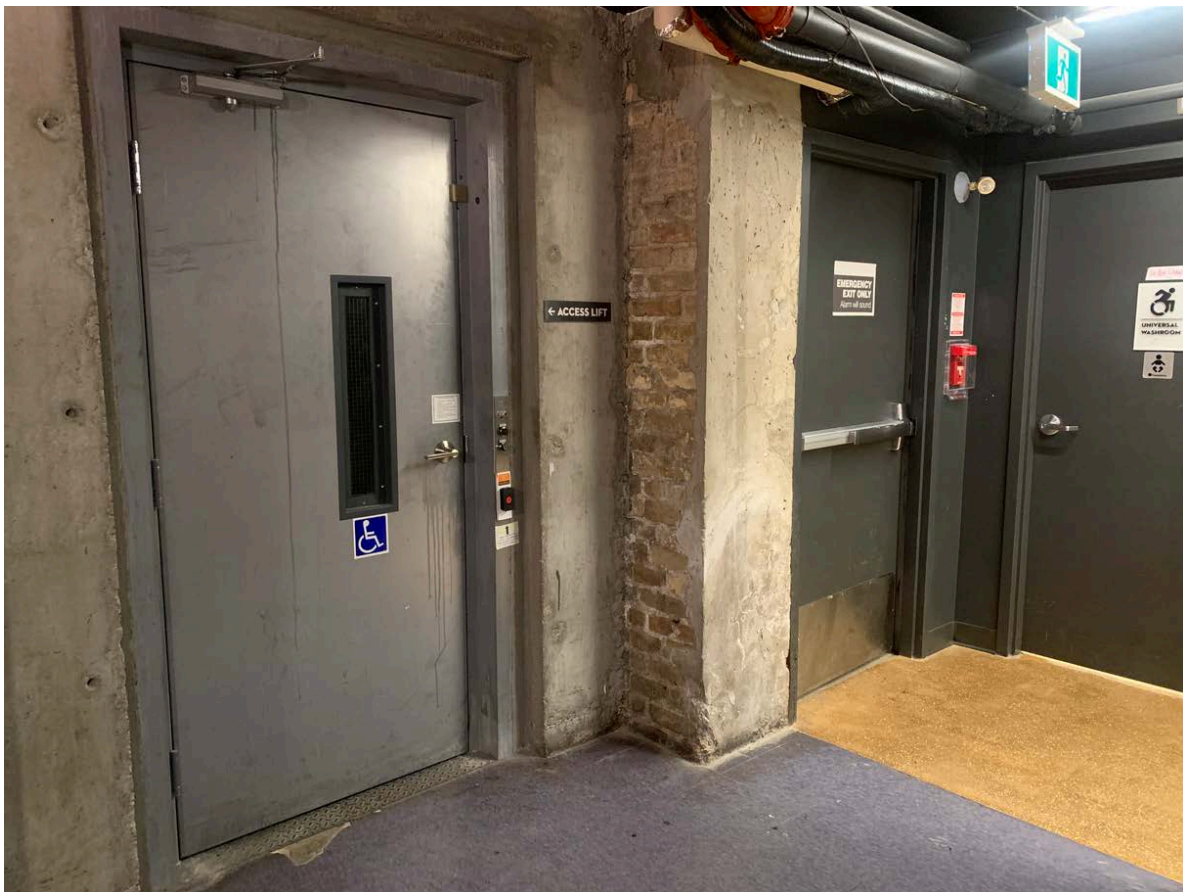


Door - 39"



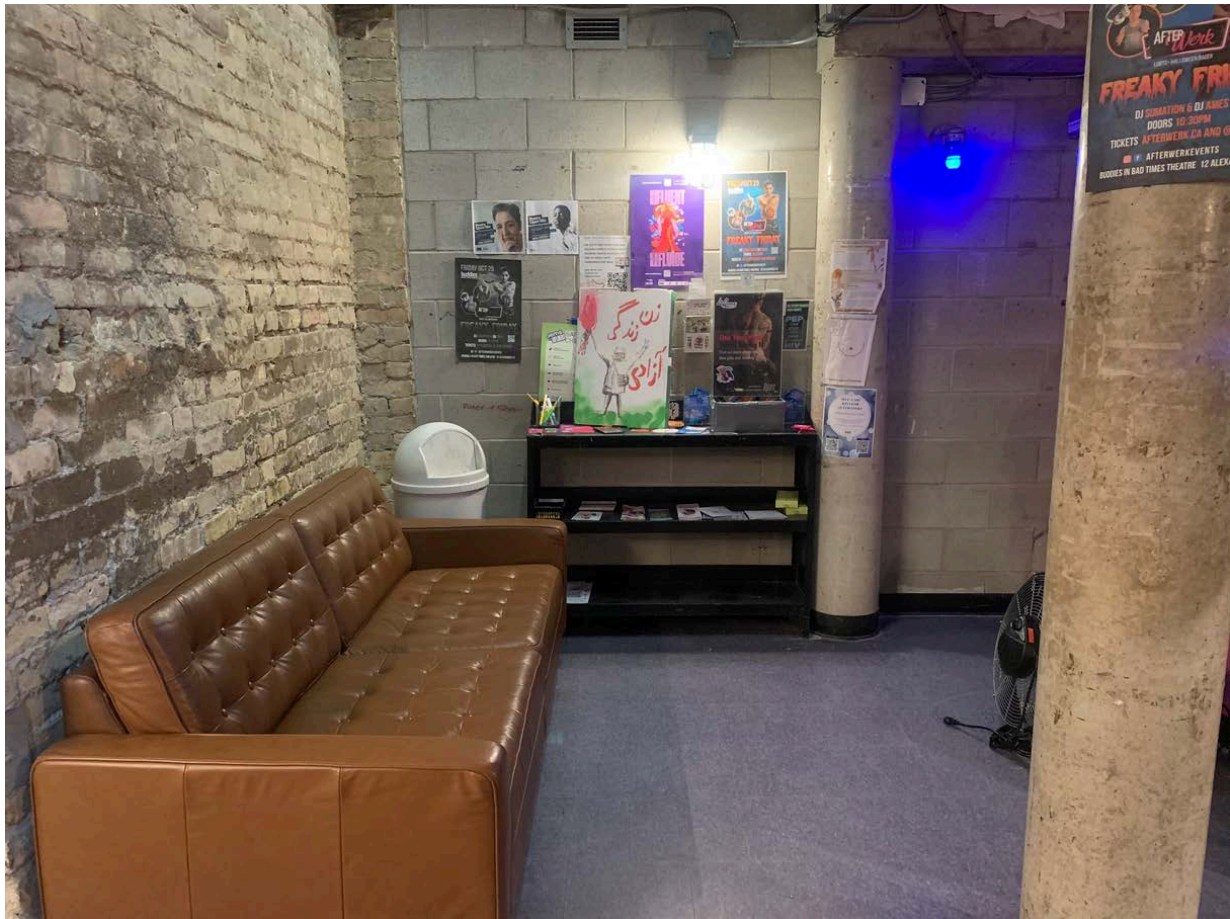
ELEVATOR

You will exit the lift on the lower level behind the staircase. The accessible washroom will be to your left and the Quiet Space will be straight ahead.



QUIET SPACE

If you need a break from the hustle and bustle of the Festival, there is a quiet area right at the bottom of the stairs where you can sit down and relax away from the noise. There will be fidget toys and earplugs available in this area.



THANK YOU!

We hope you have a good time at the Next Stage Theatre Festival.

If you want to tell us about your time or have feedback that you would like to share, you can call us, write to us, or send us an email.

Our address is
100 Broadview Avenue, Suite 322
Toronto, ON M4M 3H3
Canada

Our email address is
general@fringetoronto.com

Our phone number is
416-966-1062

Thank you for coming.

TORONTO
FRINGE

NEXT STAGE